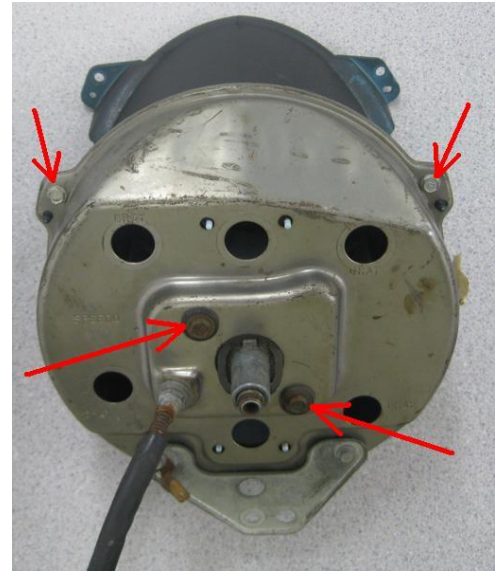


1968-77 Chevy Corvette Dakota Digital Gauge Installation

This sheet covers the installation of the Dakota Digital gauge kit into the original clusters.

1. Remove the clusters from the vehicle. The procedure for the speedometer and tachometer clusters are the same, but only one side is shown in the photos.

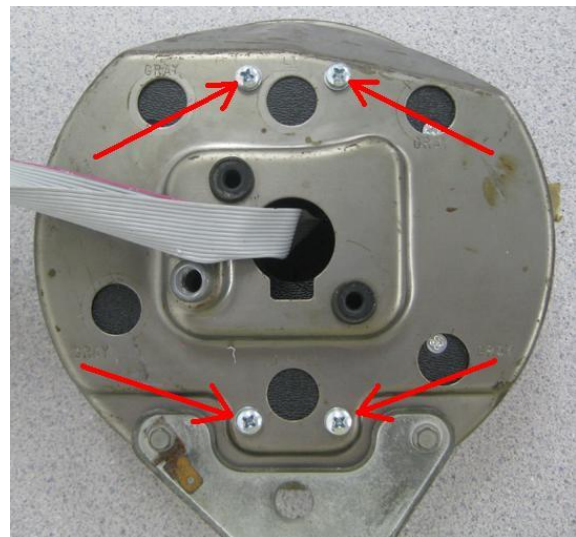
2. Remove the three screws holding the bezel on to the gauge can. Two are indicated by the upper arrows in the photo at right; one is on the bottom side of the can and cannot be seen here. After the bezel is set aside, remove the two screws near the center of the can to remove the original gauge. On the speedometer can (shown) you will also need to remove the trip meter reset cable.

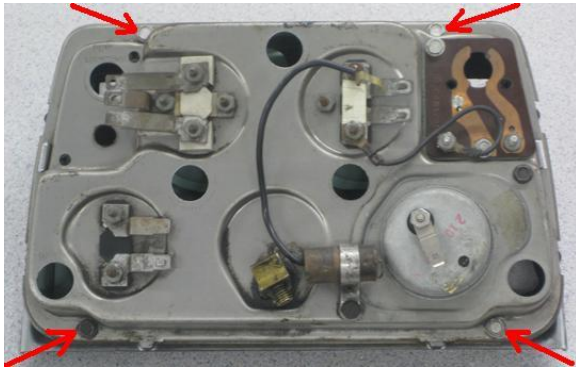


3. Use the provided flexible grommet material on the edge of the mechanical cable openings on the original gauge cans to protect the ribbon cables. A few dabs of silicone will help hold it in place. Pass the ribbon cables through the lined cable openings until the gauge assemblies sit into the cans and the cables are not being pinched.

4. Use four of the supplied #10-32 x .500" screws and lock washers to secure the gauge assembly into the can. It is recommended to start all the screws before tightening completely. If the screw holes do not line up properly, the gauge assembly is in the wrong can.

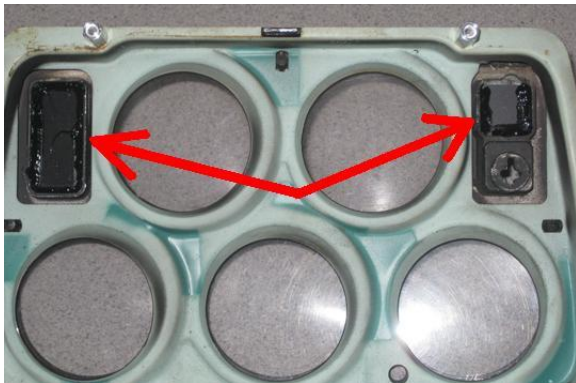
5. Re-install the bezels to the gauge cans using the screws removed in step 2.





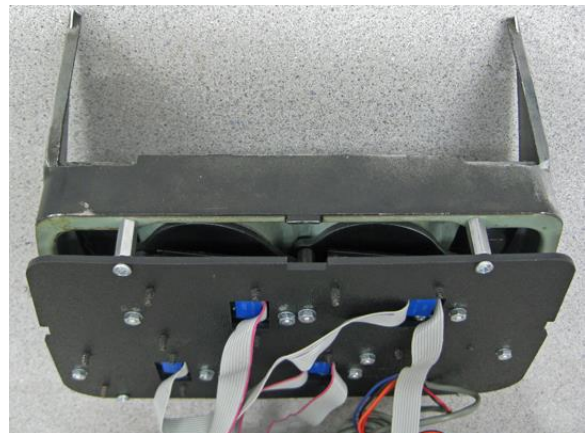
6. Remove the center gauge cluster from the vehicle. From the back side, remove the four screws as indicated by the arrows in the photo at left which hold the stock gauges to the bezel. The stock gauge assembly can be set aside.

7. Leave the clear lens and gauge separator plate in the bezel and install the four provided #6-32 x .625" standoffs in the holes that you removed the screws from in the previous step. Take care not to over tighten as the threaded portion standoffs can break.



8. Included are some lenses that can be used as block offs for the openings at the sides of the top two gauges as indicated by the arrows in the photo at left. Due to factory changes over the years, three different sizes are provided. The small one is not square and will only fit in one direction. Set these in place and secure with silicone.

9. Set the Dakota Digital gauge cluster onto the standoffs and use the four #6-32 x .250" screws and lock washers to secure it to the bezel. It is recommended to start all four screws before tightening any completely.



When installing the cluster back into the vehicle connect the two gray ribbon cables to those coming off the main cluster. The clock will need to be wired separately. Two remote mount time set switches are wired to the clock and will require 1/4" holes to be drilled to mount them.

See the main instruction manual for the remainder of the installation.

The Odyssey clock from Dakota Digital, Inc. incorporates the reliability and quality of our standard gauges, along with several unique features and easy mounting. These features include:

- Quartz accuracy.
- Night dimming feature.
- Very low standby power to prevent battery drain.
- High Visibility VFD display for sunlight readability.

The Odyssey series clock displays the current time in 12 hour format. The high brightness display matches our other Odyssey, STR, and VFD3 series gauges and has the same night brightness dimming capability.

Operation:

The gauge needs the red, orange, and black wires connected to operate. The red wire should have switched 12 volt power from an ACC. point on the fuse panel. The orange wire should have constant 12 volt power. The black wire should be connected to a good ground point. When the blue wire has 12 volts, it will dim the display for night viewing.

Setting the time:

The remote mounted red and black push buttons will be used to set the clock. The BLACK "set" button advances hours, the RED "set" button advances minutes. Each time that you make a change to either the hours or minutes, the seconds are reset to zero.

Adjusting the accuracy:

The clock is accurate to +/-2 minutes a month as it is sent. It can be tuned for better accuracy if desired. Press and hold both of the set buttons for several seconds. The clock will display "C 0". The "C" indicates that it is in the calibration mode and the second number is the current calibration value. The calibration value indicates the number of seconds to add or subtract each day. The clock can be adjusted from +7 sec/day to -7 sec/day.

Press the minute set button to change the cal value. Press the hour set button to return to normal clock operation.

Wiring:

- BLACK - connect to a good ground point in the vehicle.
- RED - connect to switched 12 volt power point.
(An accessory terminal will work for this.)
- ORANGE - connect to a constant 12 volt power point.
(This will keep the correct time.)
- BLUE - connect to the tail light circuit.

Troubleshooting guide.

Problem	Possible cause	Solution
Clock will not light up	Red wire does not have power.	Connect to a location that has power when the key is on.
	Orange wire does not have power.	Connect to a location that has power all of the time.
	Black wire is not getting a good ground.	Connect ground to a different location.
	Power is reversed.	Connect black to negative ground, red and orange to +12V power.
Clock will not turn off when the key is off.	Clock is damaged.	Return clock for repair. (see instructions)
	The red and orange wires are reversed.	Connect the red to switched power, the orange to constant power.
Clock lights up, but does not read correctly.	Loose connection on orange power wire.	Reconnect orange wire.

Clock will not keep time when	Poor ground connection. Time is not set. Clock is damaged. Orange wire does not have constant power.	Move ground to different location Set time. (see instructions) Return clock for repair. (see instructions) Connect to a location that has power the key is on or off. Reconnect orange wire.
Clock will not dim.	Loose connection on orange power wire. Poor ground connection. Blue wire is not connected correctly.	Move ground to different location Check wiring connections.
Clock remains dim at all times.	Blue wire is getting power all of the time. Battery is very low. Clock is damaged.	Connect blue wire to location that only has power when the headlights are on. Recharge or replace vehicle battery. Return clock for repair. (contact factory)

Technical specifications

Minimum operating voltage	-	7 volts
Maximum operating voltage	-	18 volts
(operating at or near maximum rating for an extended time can damage unit)		
Clock accuracy	-	±2 minute per month
Typical current draw (@ 13.8V)	-	0.13 A
Standby current draw (key off)	-	0.002 A

SERVICE AND REPAIR

DAKOTA DIGITAL offers complete service and repair of its product line. In addition, technical consultation is available to help you work through any questions or problems you may be having installing one of our products. Please read through the Troubleshooting Guide. There, you will find the solution to most problems.

Should you ever need to send the unit back for repairs, please call our technical support line, (605) 332-6513, to request a Return Merchandise Authorization number. Package the product in a good quality box along with plenty of packing material. Ship the product by UPS or insured Parcel Post. Be sure to include the RMA number on the package, and include a complete description of the problem with RMA number, your full name and address (street address preferred), and a telephone number where you can be reached during the day. Any returns for warranty work must include a copy of the dated sales receipt from your place of purchase. Send no money. We will bill you after repair.

Dakota Digital 24 Month Warranty

DAKOTA DIGITAL warrants to the ORIGINAL PURCHASER of this product that should it, under normal use and condition, be proven defective in material or workmanship within 24 MONTHS FROM THE DATE OF PURCHASE, such defect(s) will be repaired or replaced at Dakota Digital's option.

This warranty does not cover nor extend to damage to the vehicle's systems, and does not cover removal or reinstallation of the product. This Warranty does not apply to any product or part thereof which in the opinion of the Company has been damaged through alteration, improper installation, mishandling, misuse, neglect, or accident.

This Warranty is in lieu of all other expressed warranties or liabilities. Any implied warranties, including any implied warranty of merchantability, shall be limited to the duration of this written warranty. Any action for breach of any warranty hereunder, including any implied warranty of merchantability, must be brought within a period of 24 months from date of original purchase. No person or representative is authorized to assume, for Dakota Digital, any liability other than expressed herein in connection with the sale of this product.

⚠WARNING: This product can expose you to chemicals including lead, which is known to the State of California to cause cancer and birth defects or other reproductive harm. For more information go to www.P65Warnings.ca.gov



4510 W. 61st St. North
Sioux Falls, SD 57107
www.dakotadigital.com
dakotasupport@dakotadigital.com

Phone (605) 332-6513
Fax (605) 339-4106

Copyright 2011 - Dakota Digital, Inc.