



RTX-91T-FJ

Dakota Digital RTX Instrument Installation
For 1991-97 80 Series Toyota Land Cruiser

Your new RTX-91T-FJ kit includes:

RTX Display



Universal Sender Pack



Buzzer



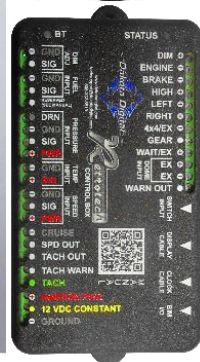
Installation Manuals



Switch Assembly



36" Main Harness



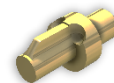
Control Box



Alternator Load Harness (Used with Three-Wire Alternators)



7" Speed Cable



Speed Sender Adapter



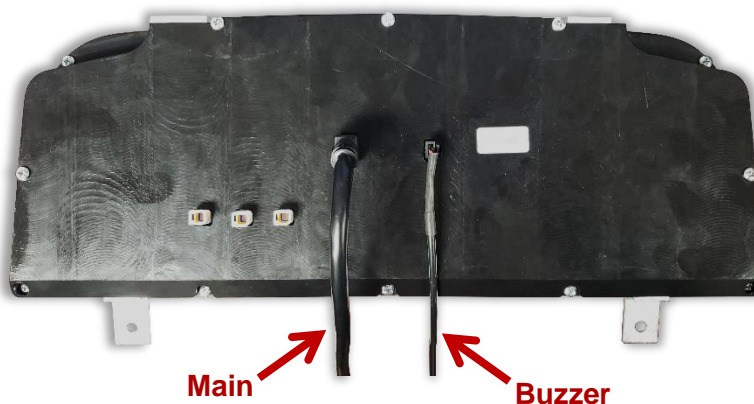
3x Indicator Harness

Installation

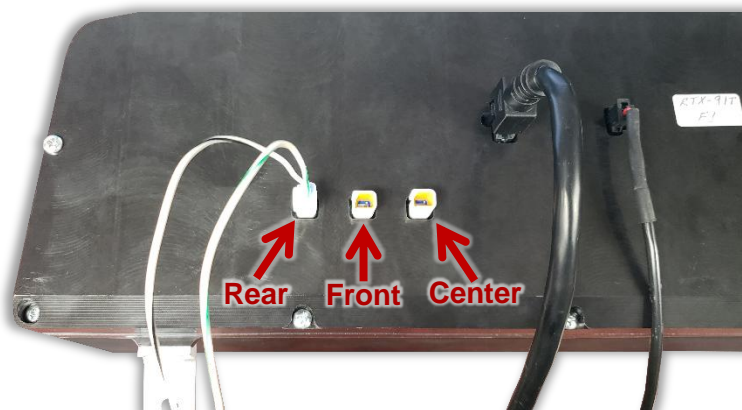
1. Disassemble the dash and remove the stock gauge cluster by removing the four screws holding the system to the dash structure. Retain all hardware for reassembly.



2. Connect the 36" Main Harness to the back of the RTX system. Carefully route the open end of the harness to the desired control box mounting location. The included Buzzer may also be connected for optional audio feedback.



3. If the stock location rear, front and center differential lock indicators are desired, do not wire the indicators to the RTX control box. Instead, use the three provided two-wire Indicator Harnesses. These harnesses plug directly into the connectors on the back side of your new RTX system:



WHITE\GREEN wire to INDICATOR CIRCUIT
WHITE\BLACK wire to CHASSIS GROUND

4. Mount the RTX display to the dash structure using the four retained factory screws.



5. Reassemble the dash in reverse order. Refer to the main RTX manual for control box wiring and setup instructions.



6. Stock 3-Wire alternators may need an additional wiring connection at the gauge cluster connector. This will 'excite' the alternator telling it to begin charging. This can be done using the included **Alternator Load Harness**.

7. For 1991-92 model Land Cruisers, the supplied speedometer pulse generator can connect directly to the stock transfer case using the included cable and brass tang. Before installation, slide the brass tang onto the end of the cable with the female-threaded collar. See photos below:

Note: 1993+ Land Cruisers use an electronic VSS speed sensor and do not use a traditional speedometer cable. Instead, the electronic signal from the factory VSS output will be connected to the RTX control box. Further detail on VSS connections is included in the main RTX manual.



Cable and tang, as delivered



7/8" thread-end of cable assembled with brass tang



Sensor threaded on to cable assembly, ready for installation

⚠ WARNING: This product can expose you to chemicals including lead, which is known to the State of California to cause cancer and birth defects or other reproductive harm. For more information go to www.P65Warnings.ca.gov



4510 W. 61st St. North
Sioux Falls, SD 57107
www.dakotadigital.com
dakotasupport@dakotadigital.com

Phone (605) 332-6513
Fax (605) 339-4106

© Copyright 2025 - Dakota Digital