



## RTX-69C-IMP

Dakota Digital RTX Instrument Installation  
For 1969-70 Chevrolet Impala and Caprice

Your new RTX-69C-IMP kit includes:

### RTX Display



### Universal Sender Pack



### Buzzer



### Installation Manuals

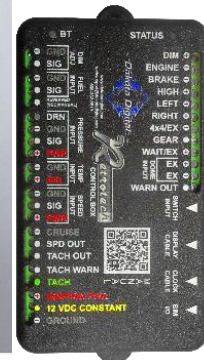


### Switch Assembly



### 36" Main Harness

### Control Box



(10) Indicator  
Harnesses



Gear Indicator Black Out

Overdrive Gear Indicator Plate



(6) 1/4" Screws

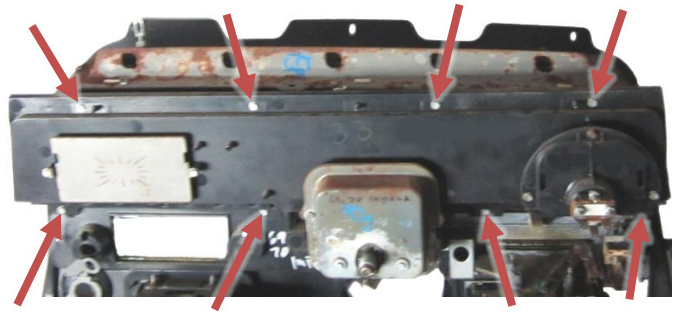
## Installation

1. First, remove the stock gauge cluster from the dash. Retain the factory hardware for reassembly.



2. Remove the stock gauge cluster from the bezel by removing the eight (8) screws.

Retain hardware for reassembly.

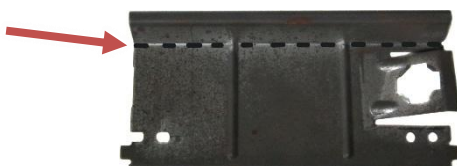


3. The indicator plate will be reused on the RTX system. Use a small flathead screwdriver or pick to push out the four (4) hardware covers then remove the screws. The covers will be reused, but the screws will not.



4. Either the stock gear indicator may be used, or it can be swapped out with the overdrive plate or black-out plate. Remove and set aside the two screws, they will not be reused.

5. The bottom gear indicator plate will need to be trimmed. Make a cut along the flanged edge as shown below.



6. Mount the gear indicator with the desired indicator plate to the RTX system using two (2) of the supplied 1/4" screws.



7. There are six (6) small tabs on the back of the indicator plate that will need to be trimmed for proper fit. The locations are shown below.



8. Mount the indicator plate to the RTX system using the remaining supplied 1/4" screws and push the hardware covers back into place.



9. Mount the RTX system to the stock bezel using the eight (8) factory screws.





10. Attach the provided Main Harness and Buzzer (for optional audio feedback) to the back of the RTX system. Carefully route the open ends to the desired control box mounting location.



Main Harness Buzzer



11. If desired, the original indicators can be used by connecting the provided harnesses and making the following connections:

WHITE\GREEN wire to INDICATOR CIRCUIT  
WHITE\BLACK wire to CHASSIS GROUND

12. Re-install the gauge bezel using the factory hardware and refer to the main RTX manual for wiring instructions to complete the system installation.



**⚠ WARNING:** This product can expose you to chemicals including lead, which is known to the State of California to cause cancer and birth defects or other reproductive harm. For more information go to [www.P65Warnings.ca.gov](http://www.P65Warnings.ca.gov)



4510 W. 61st St. North  
Sioux Falls, SD 57107  
[www.dakotadigital.com](http://www.dakotadigital.com)  
[dakotasupport@dakotadigital.com](mailto:dakotasupport@dakotadigital.com)

Phone (605) 332-6513  
Fax (605) 339-4106

© Copyright 2025 - Dakota Digital

Manual # 650857