



# RTX-61L

Dakota Digital RTX Instrument Installation  
For 1961 - '63 Lincoln Continental

Your new RTX-61L kit includes:

RTX Display



Universal Sender Pack



Buzzer



Installation Manuals



Switch Assembly



36" Main Harness

Control Box

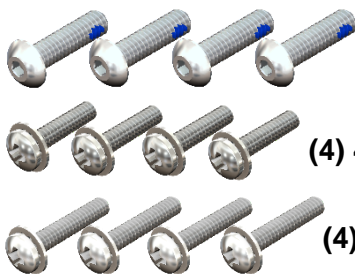
3" Flexible Plastic Grommet



3-Way Interconnect Harness



Ford Speed Adapter

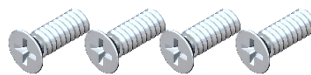


(4) 8-32 X 5/8"

(4) 4-40 X 1/2"

(4) 4-40 X 5/8"

(2) Rear ABS Panels



(4) 6-32 X 3/8"

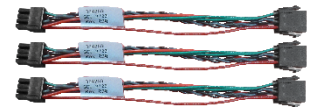


(2) 1/16" ABS Spacers

6" Buzzer Extension



(3) 6" Main Extension



## Installation

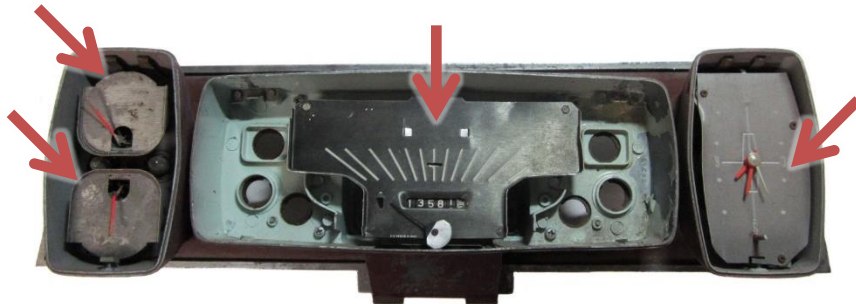
1. Remove the stock gauge cluster from the dash. Retain all hardware for reassembly.



2. Separate the gauge bezels from the housings and set them aside, as they will not be reused with the RTX system. Retain the four mounting brackets from the two side pods, as they will be reused.



3. Remove the four stock instruments from their housings.



4. Separate the speedometer housing from the rest of the cluster by removing the four noted screws, save hardware for reassembly.



5. Remove the circuit panel and metal cover plate from the back of the speed housing; retain the two cover plate screws to be reused later.



Before

6. The speed housing will need to be modified for proper fitment. Cut all protrusions within the noted area so that no surface is taller than 1/4" off the back surface.



After

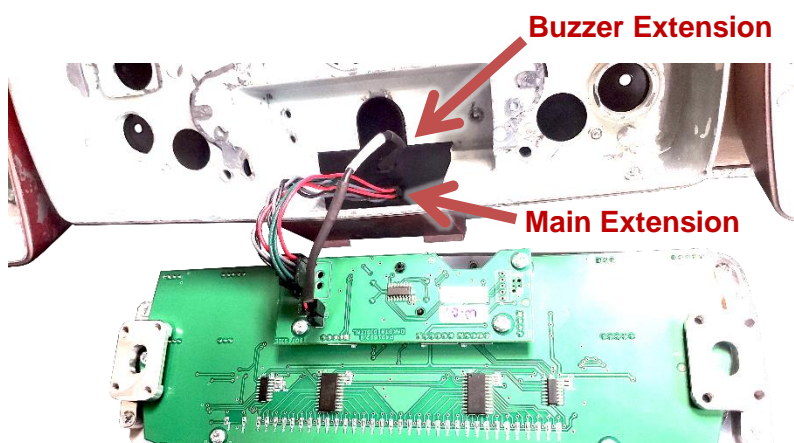
7. The clock housing will also need some modification. Remove 3/8" of material from the top of the three indicated surfaces. Also, create an extension harness exit by cutting the two holes outlined below into a slot. Fit the supplied 3" Flexible Plastic Grommet material over the new opening to prevent damage to the harness.



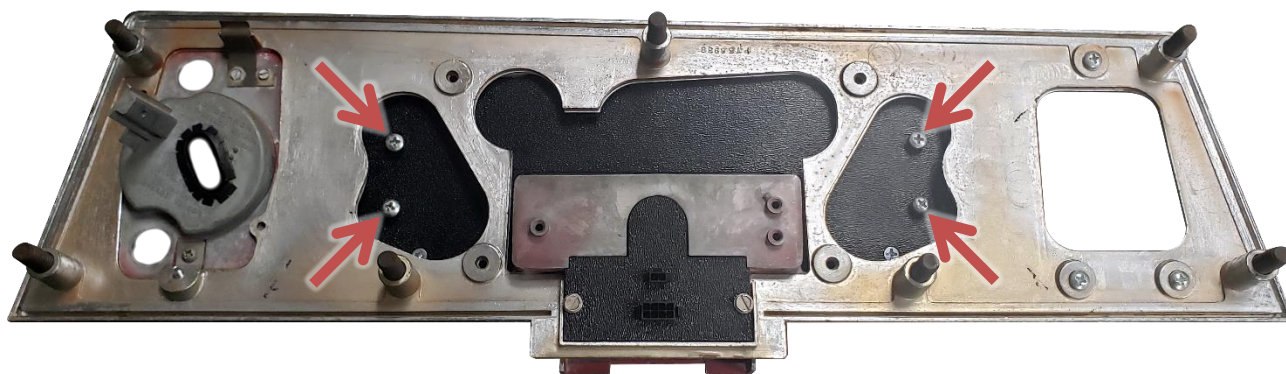
8. On the back of the speed housing, secure the supplied large ABS panel using the supplied four **6-32 x 3/8"** flat head screws. Attach the lower plug panel using the hardware retained during disassembly. The housing can now be reattached to the main cluster using the original hardware. Plug the two holes in the bottom left and right of the housing with the provided **6-32 X 3/16"** screws and original nuts.



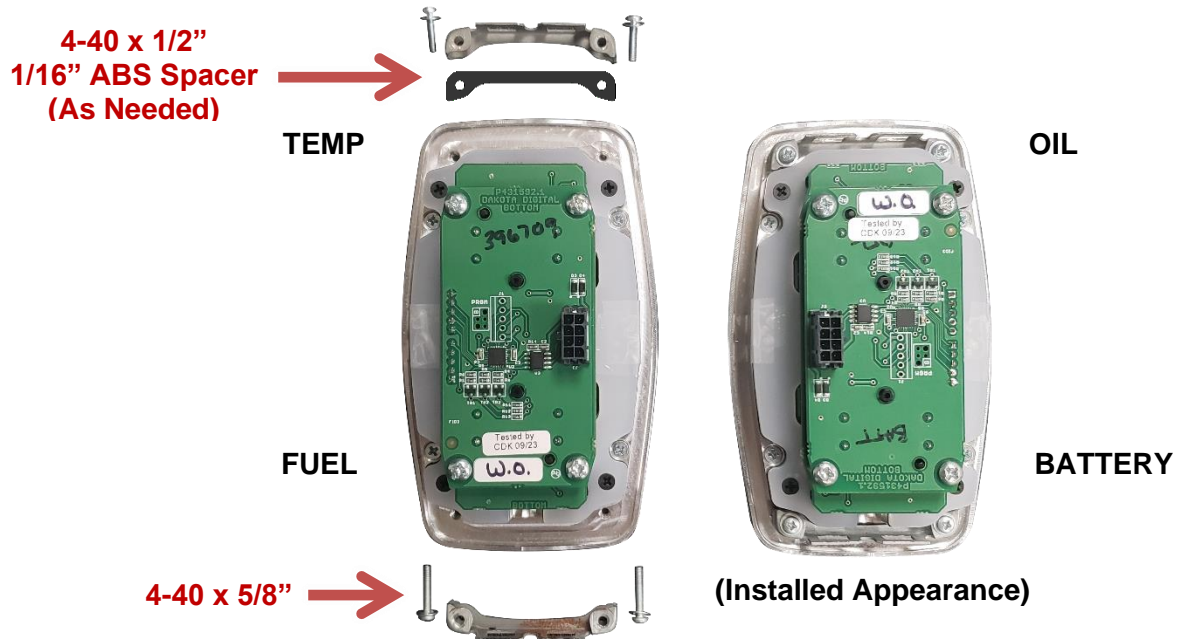
9. Using one of the one of the supplied **6" Main Extension** harnesses, connect the RTX speedometer assembly to the rear panel of the main housing. Also connect the smaller **6" Buzzer Extension** harness to the rear panel.



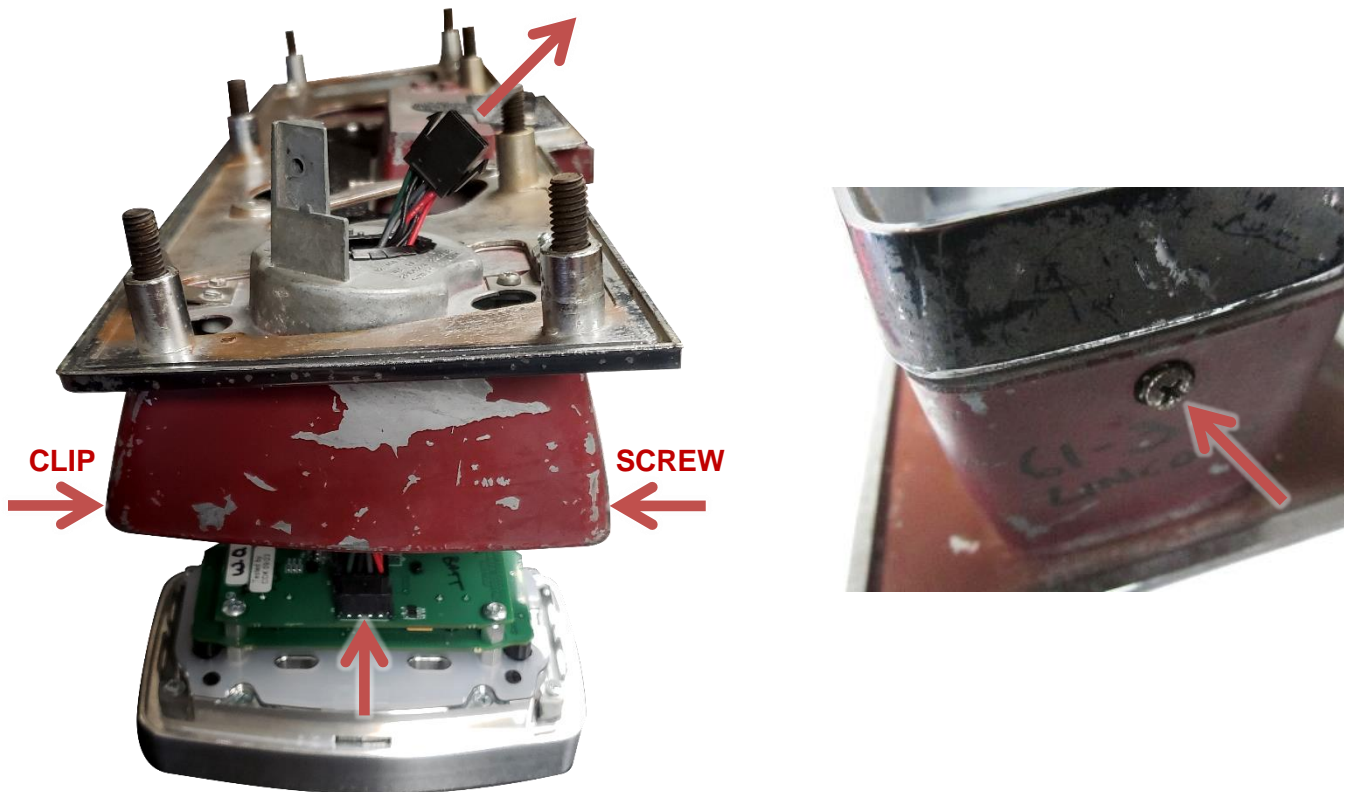
10. The RTX speedometer assembly is now ready to be mounted into the factory cluster. The two outside mounting brackets will line up with the holes on the rear ABS cover where it will be secured with the four supplied larger diameter **8-32 x 5/8"** thread-locker screws.



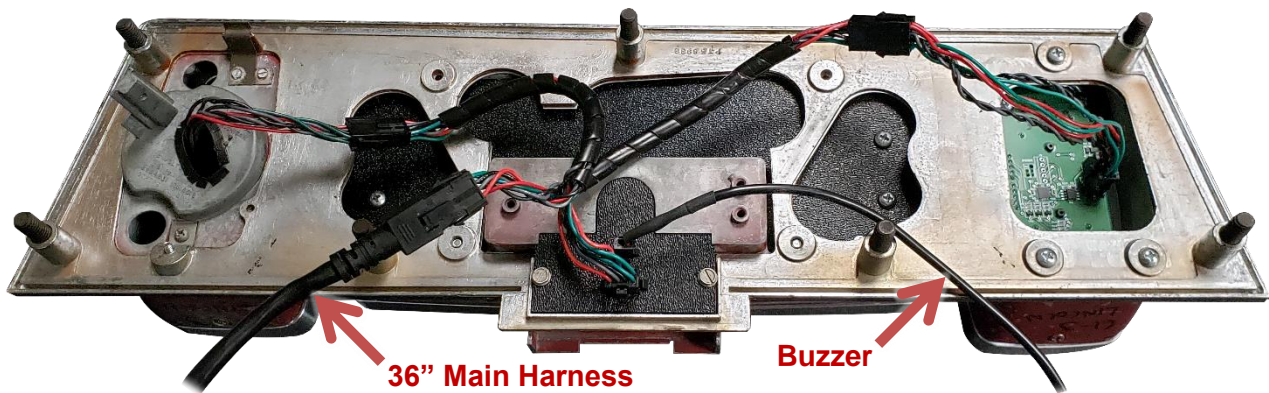
11. Attach the four retained factory mounting brackets to the RTX side gauges. The top Temp and Oil gauges may use the included **1/16" ABS Spacers** as needed underneath the brackets for proper fit, and will use the included four shorter **4-40 x 1/2"** screws. The bottom gauge brackets are mounted flat to the RTX bezels with the four longer **4-40 x 5/8"** screws.



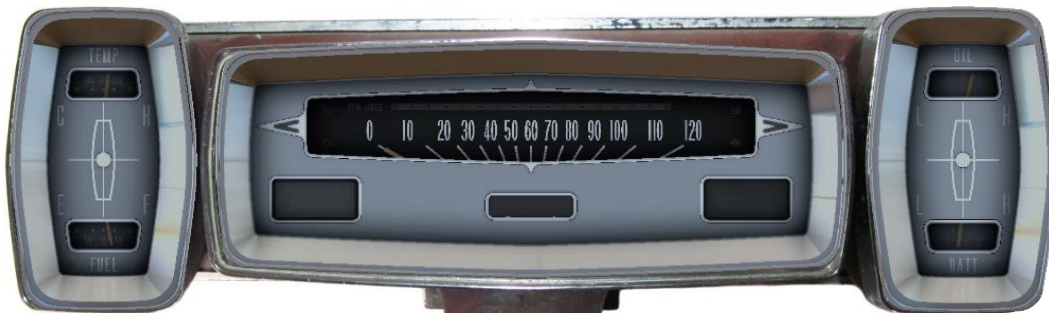
12. The RTX side gauges are now ready to re-install into the factory cluster. Temp/Fuel will be mounted on the left and Oil/Battery on the right. Attach one of the provided **Main Extension Harnesses** to each gauge and carefully route the cables through the back-side openings. Secure the gauges using the same procedure as the stock gauges with the factory screw clamping the bezel mounting bracket against the square nut.



13. Connect the three main extension harnesses using the provided **3-Way Interconnect Harness**, then connect the **36" Main Harness** to the open end of the interconnect harness. The included **Buzzer** may also be connected for optional audio feedback.



14. The cluster is now ready to re-install into the vehicle using stock hardware. Take care when routing the main harness cable to the control box mounting location. Refer to the main manual to complete the RTX installation.



**⚠️WARNING:** This product can expose you to chemicals including lead, which is known to the State of California to cause cancer and birth defects or other reproductive harm. For more information go to [www.P65Warnings.ca.gov](http://www.P65Warnings.ca.gov)



4510 W. 61st St. North  
Sioux Falls, SD 57107  
[www.dakotadigital.com](http://www.dakotadigital.com)  
[dakotasupport@dakotadigital.com](mailto:dakotasupport@dakotadigital.com)

Phone (605) 332-6513  
Fax (605) 339-4106

© Copyright 2023 - Dakota Digital

Manual #650825