



RLC-51C

Dakota Digital RTX Clock Installation
For 1951-'52 Chevrolet Car

Your new RLC-51C kit includes:

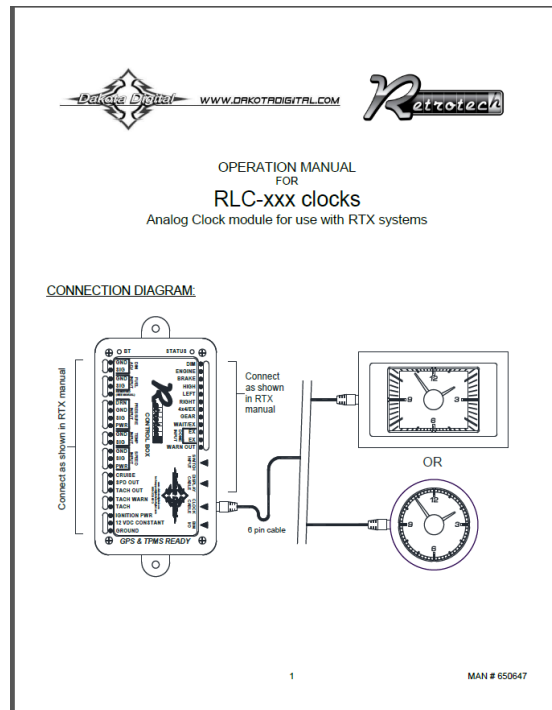


RLC Clock



Harness

Installation Manual



Long L-Bracket



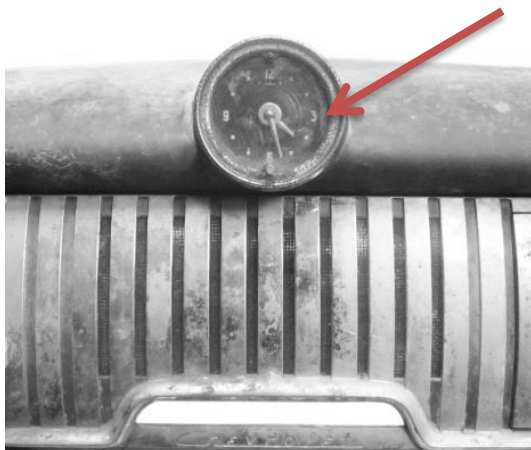
Short L-Bracket



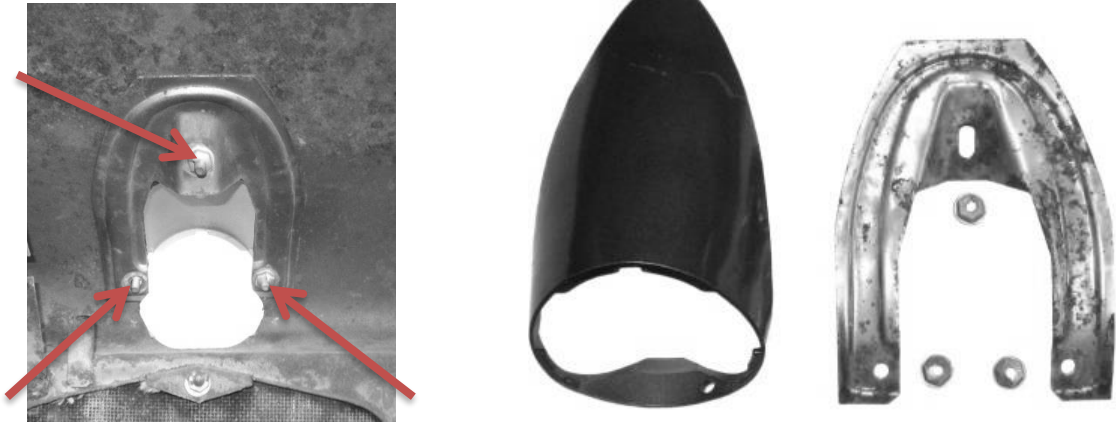
2 x 3/8" screws

Installation

1. Disconnect and remove the original clock.



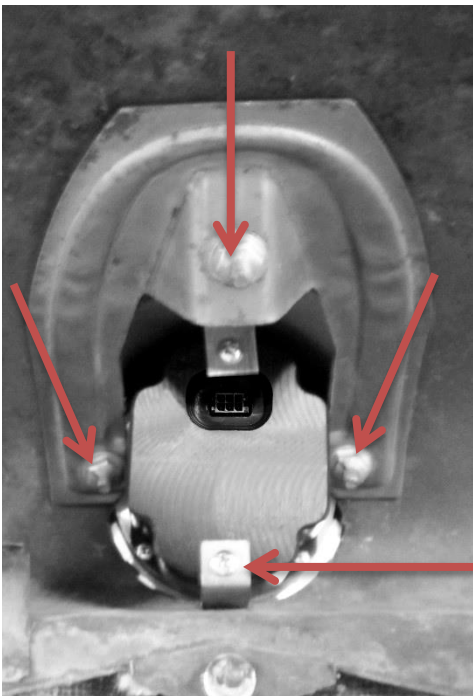
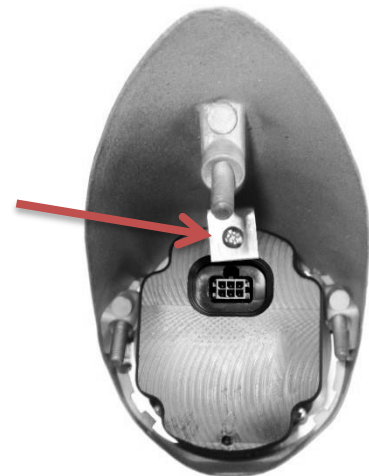
2. Underneath the dash; remove the three (3) nuts that hold the back plate and clock bezel to the dash. Retain these parts for reassembly.



3. Insert the RLC gauge into the clock bezel, making sure it is centered. Then, partially secure the gauge on the top side with the supplied long L-bracket and one of the supplied 3/8" screws.



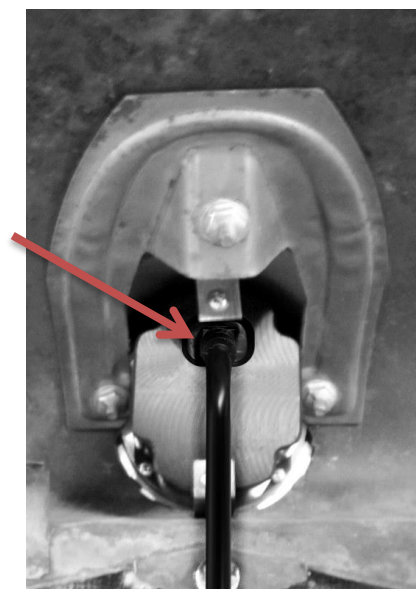
Long L-Bracket



4. Insert the clock bezel into the dash and retain the bezel with the factory back plate and nuts that were saved from removal. Also secure the bottom part of the gauge to the dash using the provided short L-bracket and the remaining provided screw.

Short L-Bracket

5. Connect the provided RLC harness to the back of the clock.



6. Refer to the enclosed clock operating manual for remaining connections and clock setup.

⚠ WARNING: This product can expose you to chemicals including lead, which is known to the State of California to cause cancer and birth defects or other reproductive harm. For more information go to www.P65Warnings.ca.gov



4510 W. 61st St. North
Sioux Falls, SD 57107
www.dakotadigital.com
dakotasupport@dakotadigital.com

Phone (605) 332-6513
Fax (605) 339-4106

© Copyright 2020 - Dakota Digital