

VHX-69C-CAM

Dakota Digital VHX Instrument Installation
For '69 Chevy Camaro systems

Your new VHX-69C-CAM kit will include:



Installation

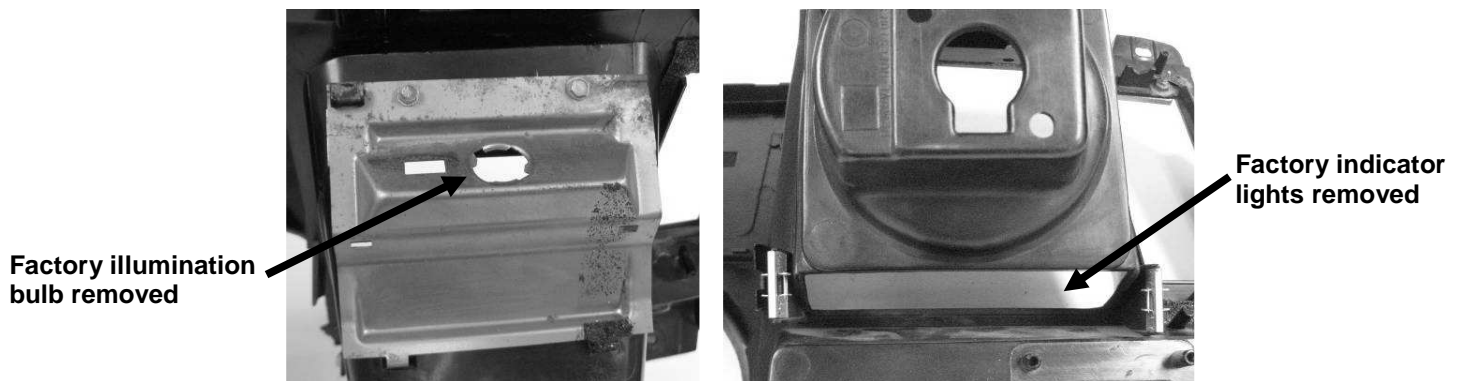
1. You may be able to access all of the fasteners with the dash carrier installed, removing the entire assembly may not be necessary. First, remove the clear lenses from the front. Next, remove the original gauge internals; they are held into the housing with nuts from the backside. The discarded pieces should match the photo below:



2. Once the original gauge internals have been removed, there are two reflectors (one on each side) inside the housing that need to be removed for clearance of the new VHX gauges (see photo).



3. Now, remove the light bulbs and indicator light panels. Since these functions are built into the VHX system, you can rewire the indicator wires to the control box to retain the desired indicators.

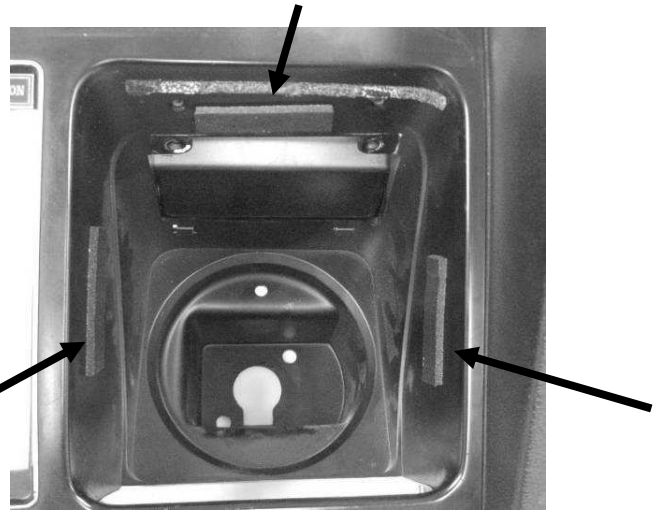


4. You should be left with a bare housing, now you are ready for VHX installation. This is also a good time to clean the original housing to remove any dust/dirt before installation of your new gauges.

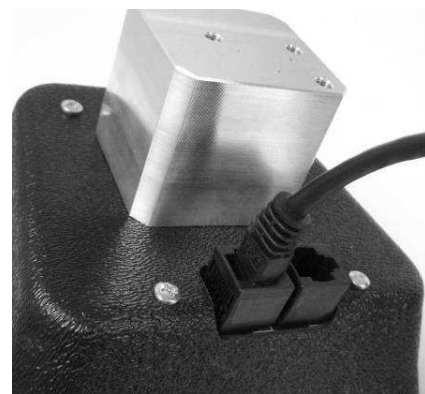


5. Begin with the speedometer installation first; located in the left side opening in the factory dash. Cut three pieces of the supplied foam tape, 2" long. Install foam strips on the top and sides of each opening about 1/2" down from the face of the housing. This foam provides a cushion where the new VHX cans are installed and forms a tight, rattle-free fit.

Foam Tape



6. Connect one of the CAT5 cables to the new VHX speed gauge. The speed gauge has two connectors on the back, only one will be used and it does not matter which one you connect to; leave the other connector open.

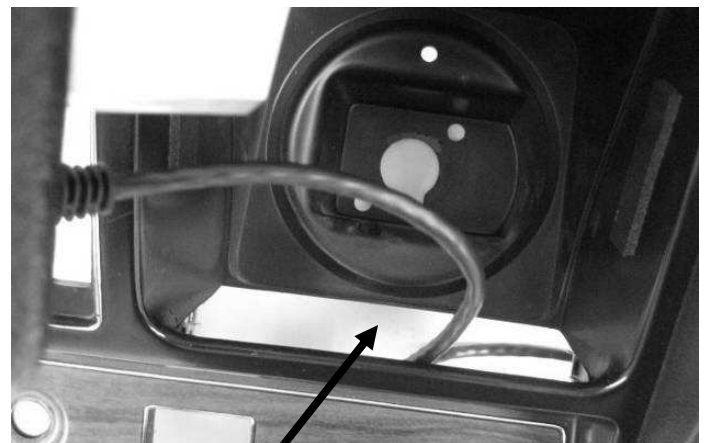


7. Remove the protective lens tape and insert the VHX **speedometer** into the **left** side of the factory housing. You will need to fold the CAT5 cable and route it through the opening where the original indicator lights were mounted in order to get the VHX bezel to sit flush with the housing. As the gauge goes in, route the CAT5 cable through the opening in the bottom of the housing, keeping in mind the cable needs to reach the control box.



Pre-bend cable to side before installing so unit will sit flush once inserted into dash

Leave open

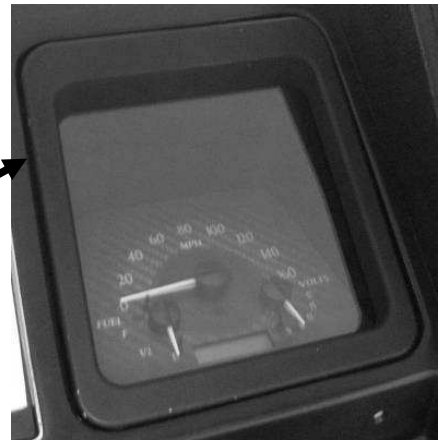


Cable routed through indicator light opening

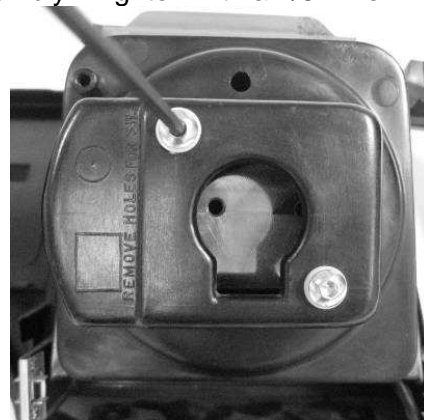
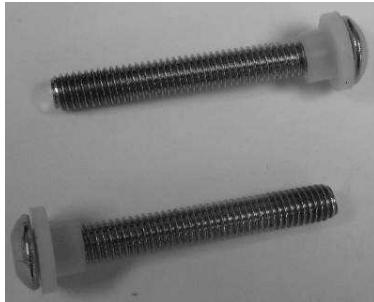


WRONG!!!!
Cable will get
pinched by the
pull block

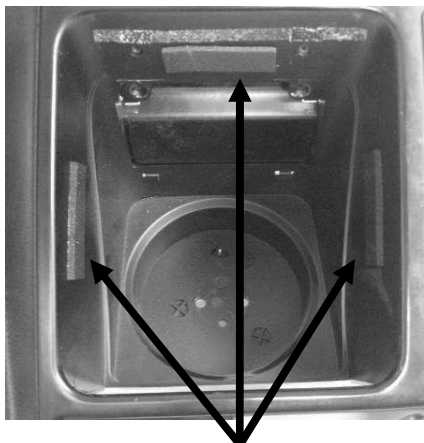
**Bezel flush with housing
once fully seated in housing
and cable properly routed**



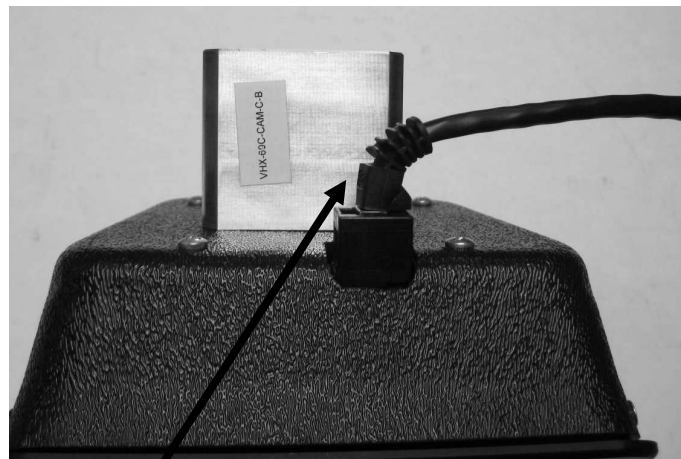
- Using the two provided **10-32 x 1.5"** screws and **nylon shoulder washers**, secure the speedometer assembly to the housing. Start the screws into the back of the factory housing and into the pull-block on the back of the gauge assembly. Tighten with a 1/8" Allen wrench.



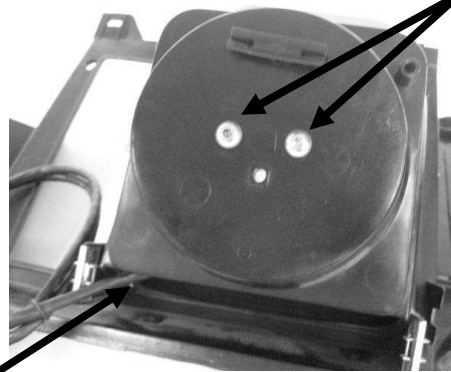
- To install the tachometer, repeat the steps above, making sure to use the shorter screws and plastic washers. The tachometer uses two **10-32 x 1"** screws and two **flat nylon washers** to secure the gauge.



Foam tape



**Pre-bend cable to side before
installing so unit will sit flush
once inserted into dash**



Mounting screws

Cable routed through indicator light opening

10. Both cables should be routed through the stock indicator light opening; the system is ready for re-installation into the dash if it was removed.



11. As the system is installed, route both CAT5 cables to the control box and connect them to two of the three jacks on the control box. It doesn't matter which cable goes where, all of the jacks are the same.



12. Display installation is complete, refer to the main manual for wiring instructions to complete the VHX installation.



4510 W. 61st St. N., Sioux Falls SD 57107
Phone: (605) 332-6513 Fax: (605) 339-4106
www.dakotadigital.com
dakotasupport@dakotadigital.com

Manual # 650318