



WWW.DAKOTADIGITAL.COM

VHX-68C-VET

Dakota Digital VHX Instrument Installation
For 1968-'77 Corvette

Your new VHX-68C-VET kit includes:

VHX Displays

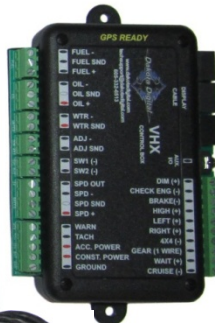


Installation Manuals



(2) ABS Mounting Brackets
(2) Thumb Nuts

Control Box



(3) Block-Off Lenses



Clock Switch Harness



Clock Switch



Universal Sender Pack



(1) 60" CAT5 Cable
(1) 36" CAT5 Cable
(1) 12" CAT5 Cable



Installation

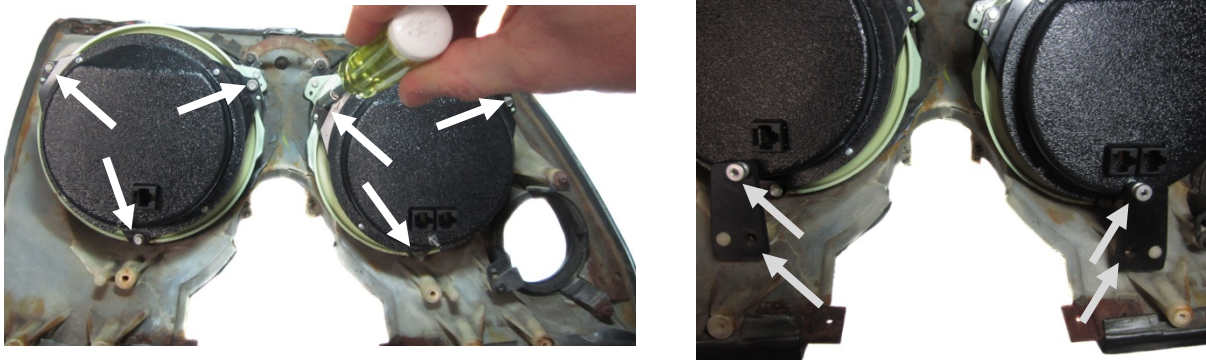
1. Remove the stock gauge clusters from the dash and save all hardware for reassembly.



2. Remove the stock gauges, separator plate, and lenses from the bezels. For the main cluster, reattach the lens spacer to the bezel after removing the lens as shown (white arrows). The only items to be reused are the original front bezels and gauge mounting hardware. Now is a good time to clean or refinish the bezels.



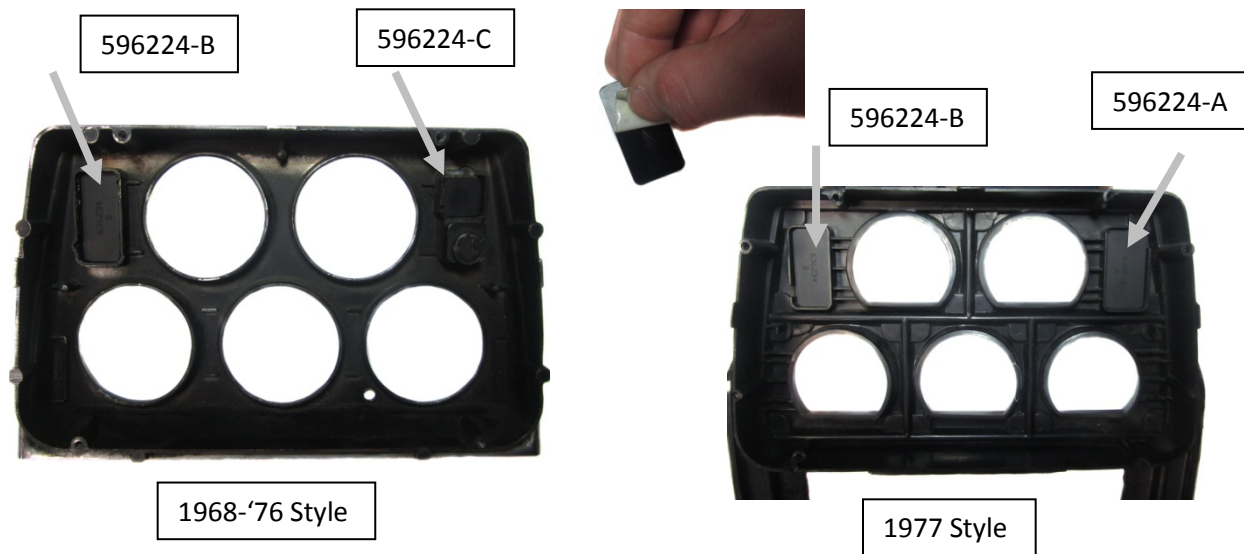
3. The Speedometer and Tachometer are interchangeable side to side. Choose the orientation you prefer, then place the Speed and Tach on the main lens spacers and secure the gauges with the six (6) stock mounting screws. Use two (2) stock mounting screws to attach the ABS plastic brackets to the bezel and thumb screws to secure the brackets to the VHX gauges.



4. Once the VHX gauges are secured to the bezel; connect the 12" CAT5 cable to the Tachometer, and the other end to either port on the Speedometer, connecting the two halves. With the 36" CAT5 cable, connect one end to the open port on the Speedometer, and as the assembled cluster is installed into the dash, carefully route the other end of the cable to the control box mounting location.



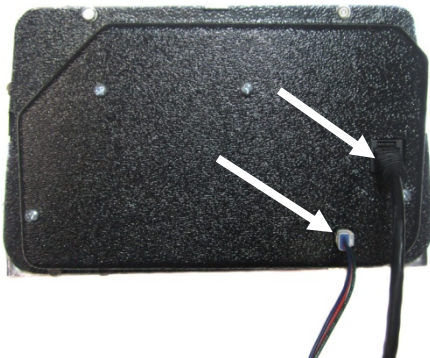
5. Peel the paper off the two block-off lenses needed for the back of the housing appropriate for your vehicle. Place them shiny side down in the two indicator openings. Use silicone to hold them in place and avoid handling until the silicone has cured.



6. With the block-off lens in place, place the VHX center gauges over the back of the center bezel and secure the system by using the four (4) stock mounting screws.



7. Attach the provided 60" CAT5 Cable and the 3-Pin Switch Harness to the back of the VHX display. Carefully route the other ends to the control box mounting location and refer to manual 650360 for switch wiring instructions.



8. The clusters are now ready to re-install into the vehicle using stock hardware. Refer to the main manual for wiring instructions to complete the VHX installation.



4510 W. 61st St. N., Sioux Falls SD 57107
Phone: (605) 332-6513 Fax: (605) 339-4106
www.dakotadigital.com
dakotasupport@dakotadigital.com