



# VHX-63B-RIV

Dakota Digital VHX Instrument Installation  
For 1963-'65 Buick Riviera

Your new VHX-63B-RIV kit includes:

VHX Displays



Indicator Panel



Universal Sender Pack



Installation Manuals



Control Box



(2) Thumb Nuts



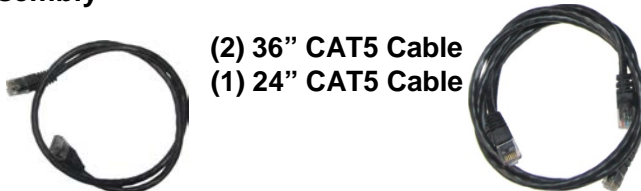
Clock Power Harness



Switch Assembly



(2) 36" CAT5 Cable  
(1) 24" CAT5 Cable



(3) Indicator Harnesses



## Installation

1. Remove the stock gauge cluster from the dash and save all hardware for reassembly.





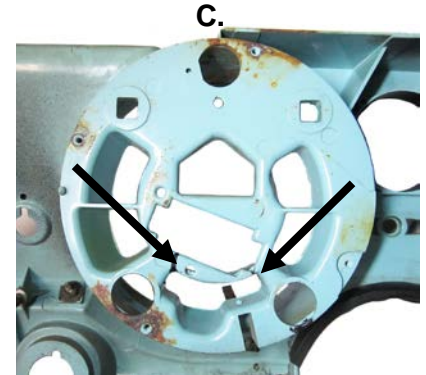
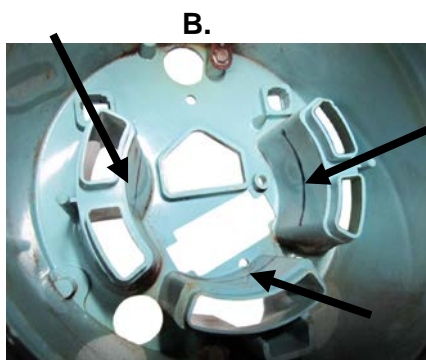
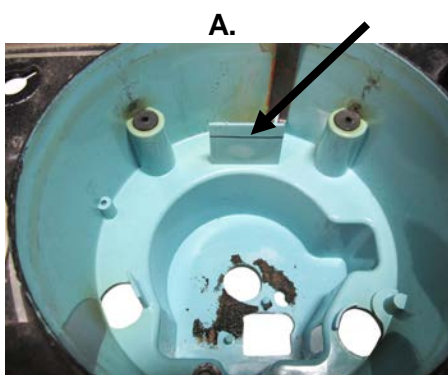
2. Remove the clock and all the gauge parts on the back of the gauge panel.

3. Remove the gauge bezels to begin removing the gauge pieces. Save the two (2) set screws for reassembly.

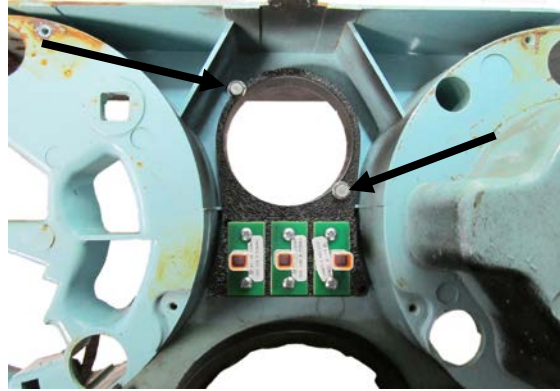


4. The bezel mounting tabs will be reused and can remain in place; all other pieces need to be removed and set aside.

5. In the photos below you will see markings inside of the housing that needs to be trimmed for clearance and cable routing. The left side of the housing shown in Photo A. has one tab that needs to be trimmed  $\frac{3}{4}$ " from the base of the tab. Photo B. shows the right side of the housing and three light guide areas that also need to be trimmed  $\frac{3}{4}$ " from the base. Photo C. shows the right side of the housing on the backside and the whole cross section that needs to be removed for cable routing.



6. Using two original 1/2" screws, mount the indicator panel to the back of the gauge housing as shown below.



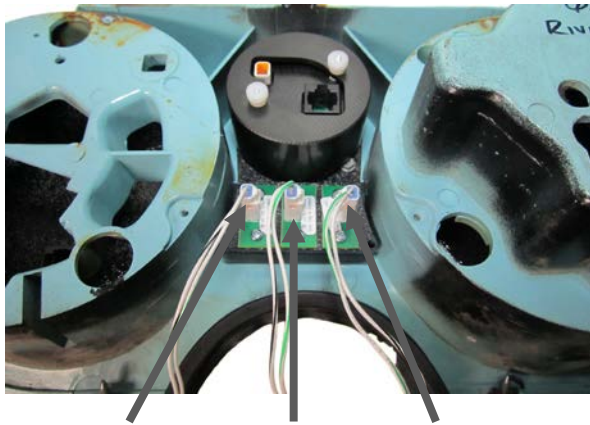
7. Remove the two screws that mount the bezel to the original clock; use the same two screws to mount the bezel to the VHX clock. From the front side of the housing, place the VHX clock into the clock opening, center the gauge, and secure the it using the clock mounting cup and the supplied thumb nuts



8. Remove the lens from the two large bezels and reuse the same screws to mount the bezels to the VHX speed and tach displays.



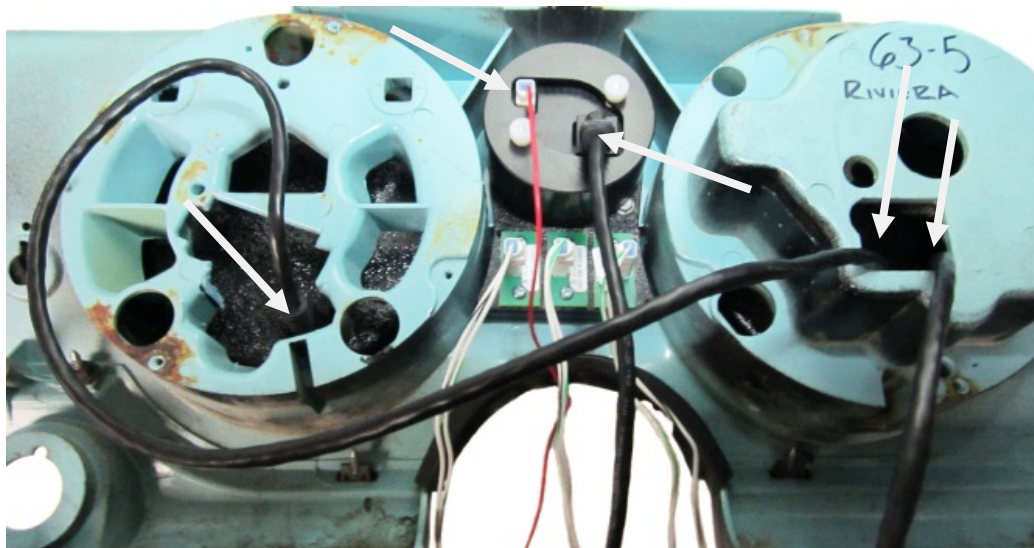
- With the bezels attached, place the VHX speed into the left opening and the VHX tach into the right. Ensure there are no obstructions with fitment, if there is review step 5. With proper fitment use the two set crews from disassembly and secure the bezels to the housing.



**Right Blinker    High Beam    Left Blinker**

- If desired, the original indicators can be used by connecting the provided indicator harnesses and making the following connections:  
 WHITE\GREEN wire to INDICATOR CIRCUIT  
 WHITE\BLACK wire to CHASSIS GROUND

- Connect one end of the 24" CAT5 cable to the Tachometer and the other end to either port on the Speedometer, connecting the two halves. With one of the 36" CAT5 cables, connect one end to the open port on the Speedometer. The final 36" CAT5 cable will connect to the clock as well as the clock power harness.



12. The cluster is now ready to re-install into the vehicle using stock hardware, take care when routing the CAT5 cables to the control box mounting location. Refer to the main manual and the 650462 clock manual for wiring instructions to complete the VHX installation.



**⚠ WARNING:** This product can expose you to chemicals including lead, which is known to the State of California to cause cancer and birth defects or other reproductive harm. For more information go to [www.P65Warnings.ca.gov](http://www.P65Warnings.ca.gov)



4510 W. 61st St. North  
Sioux Falls, SD 57107  
[www.dakotadigital.com](http://www.dakotadigital.com)

[dakotasupport@dakotadigital.com](mailto:dakotasupport@dakotadigital.com) Copyright 2011 - Dakota Digital, Inc.

Phone (605) 332-6513  
Fax (605) 339-4106