



HDX-70P-FIR

Dakota Digital HDX Instrument Installation
For 1970-'81 Pontiac Firebird

Your new HDX-70P-FIR kit includes:

HDX Display



Mounting Cups



(10) Plastic Thumb Nuts

Universal Sender Pack

Buzzer

Installation Manuals



(2) Blinker Harnesses



Main Harness

Control Box



Leveling Brackets



Main Interconnect Harness



Auxiliary Y Harness



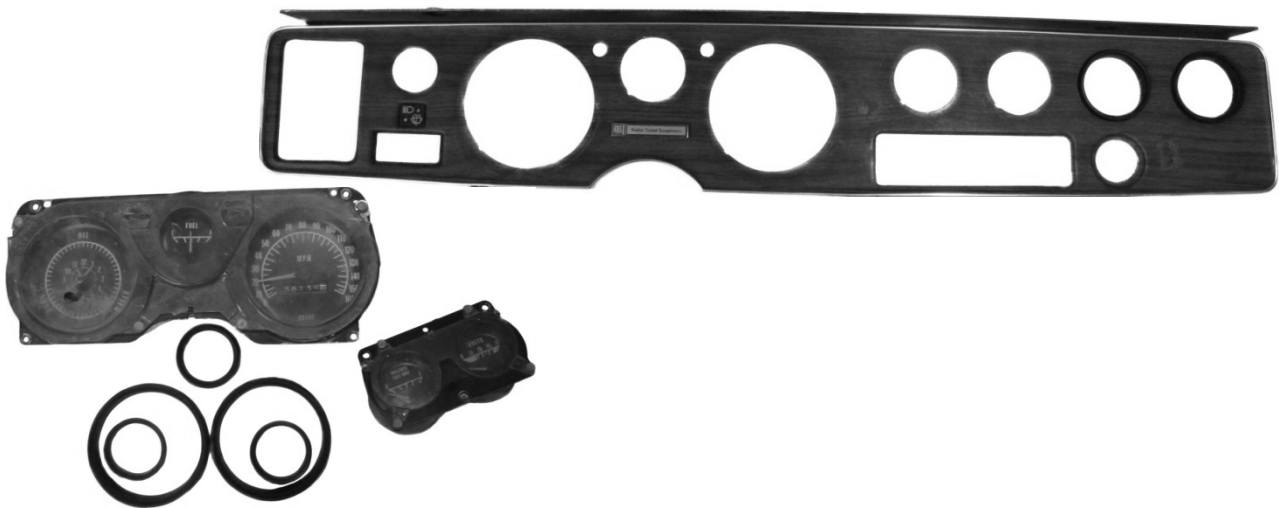
Terminal End

Installation

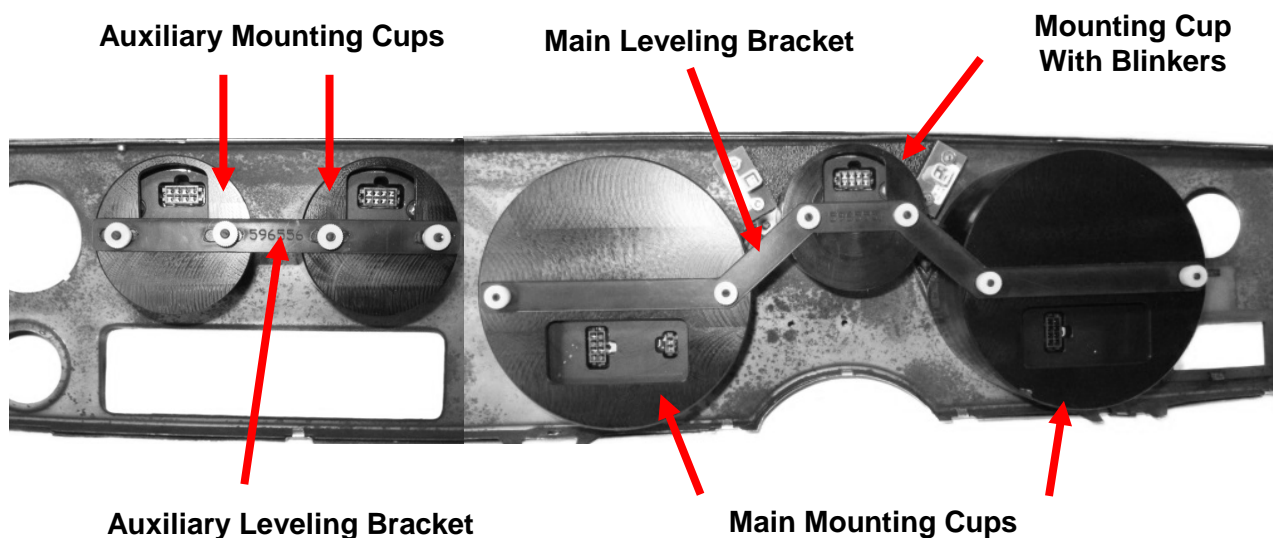
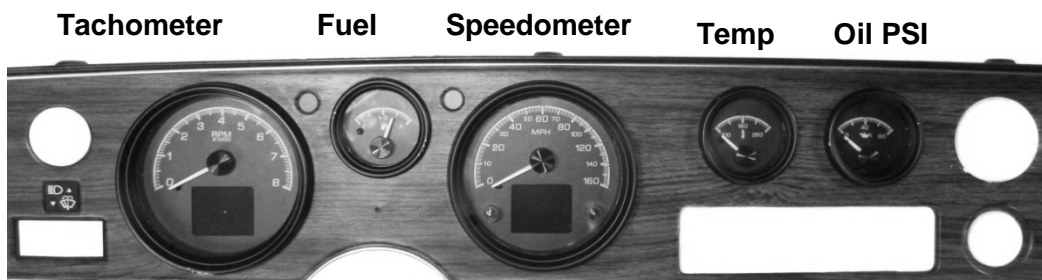
1. First, remove the stock gauge bezel from the dash. Retain the factory hardware for reassembly.



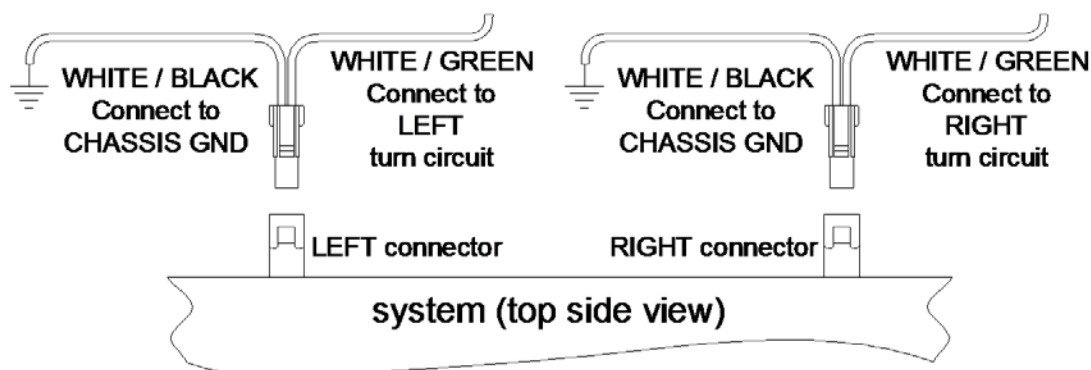
2. Remove the stock gauges from the dash and the gauge trim rings from the bezel. These items will not be reused and can be set aside.



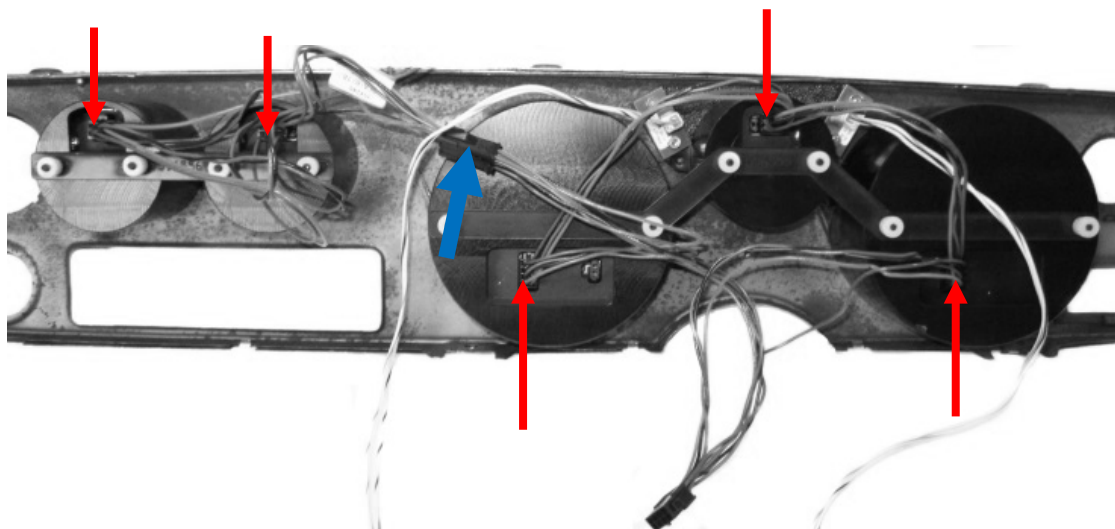
3. You are now ready to mount the gauges; slide the gauge into the bezel from the front and place the appropriate mounting cup over the back of the gauge. Use the provided leveling brackets and thumb nuts to secure the gauge in place. **If you have a three-gauge bezel, you may set two gauges aside and not use them or make holes for the additional gauges.**



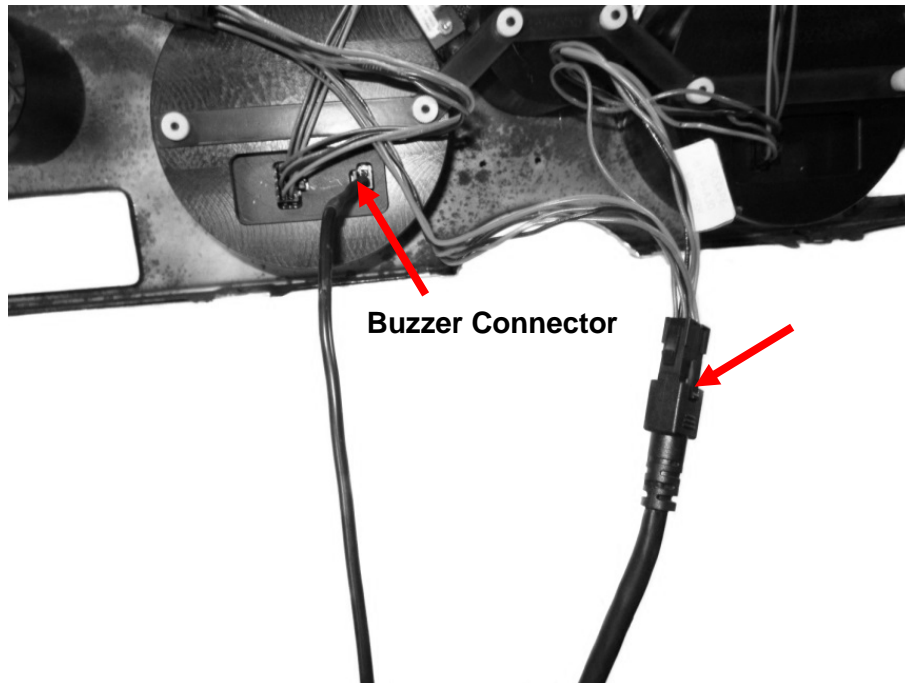
4. This system comes with two options for the turn signals. You can either have arrows located in the faceplate of your new HDX display, and/or arrows in your vehicle's stock turn signal locations. To use the new faceplate arrows, follow the wiring instructions for the turn signals found in the main HDX manual.
- To optionally use the stock turn signal arrows, do not wire the turn signals to the HDX control box. Instead, use the two provided two-wire harnesses. The harnesses plug directly into connectors on the back side of your new HDX system. Connect the wires from these harnesses to your turn signal circuit and ground as shown below. Doing this will light green LED bulbs, located in the original locations of your dash panel, when turn signals are active. Make sure to check left and right to verify they are wired correctly.



5. Connect the provided main interconnect harness to the Speed, Fuel, and Tach. If these are the only gauges you will be using; connect the terminal end harness to the open end of the interconnect harness (blue arrow). If using the remaining gauges; connect the provided Y harness to the two gauges as well as the open end of the main interconnect harness (blue arrow).



6. Connect the provided Main Harness to the interconnect harness and the Buzzer (optional for audio feedback) to the back of the HDX system.



7. Carefully re-install the dash bezel with the mounted HDX system into the car using factory hardware and refer to the main manual for wiring instructions to complete the HDX installation.



⚠ WARNING: This product can expose you to chemicals including lead, which is known to the State of California to cause cancer and birth defects or other reproductive harm. For more information go to www.P65Warnings.ca.gov



4510 W. 61st St. North
Sioux Falls, SD 57107
www.dakotadigital.com
dakotasupport@dakotadigital.com

Phone (605) 332-6513
Fax (605) 339-4106

© Copyright 2018 - Dakota Digital