



HDX-68C-VET

Dakota Digital HDX Instrument Installation
For 1968-'77 Corvettes

Your new HDX-68C-VET kit includes:

HDX Displays



Washer



Extended Mounting
Bracket

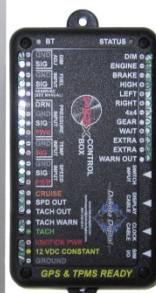
Universal Sender
Pack



(2) Mounting Brackets
(2) Thumb Nuts



(3) Block-Off Lenses



Control Box



Clock Harness

(2) Main Harnesses



Y Harness



Interconnect
Harness

Installation

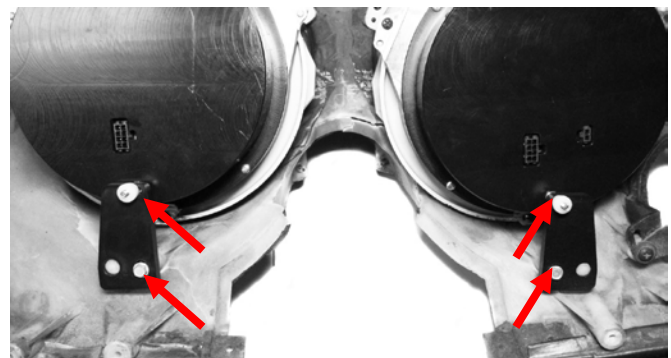
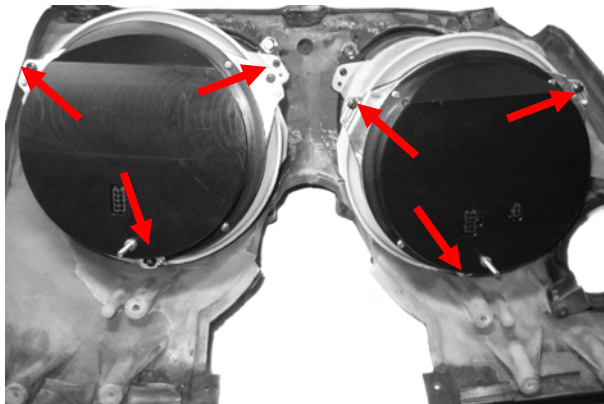
1. Remove the stock gauge clusters from the dash and save all hardware for reassembly.



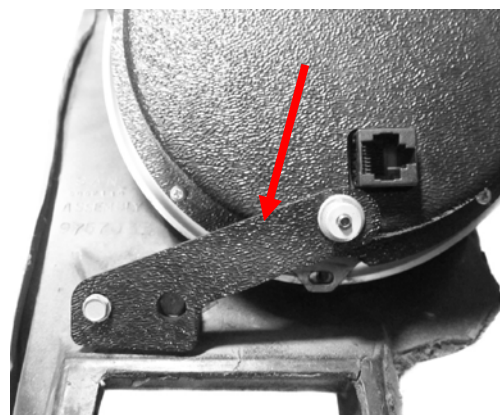
2. Remove the stock gauges, separator plate, and lenses from the bezels. For the main cluster, reattach the lens spacer to the bezel after removing the lens as shown. The only items to be reused are the original front bezels and gauge mounting hardware.



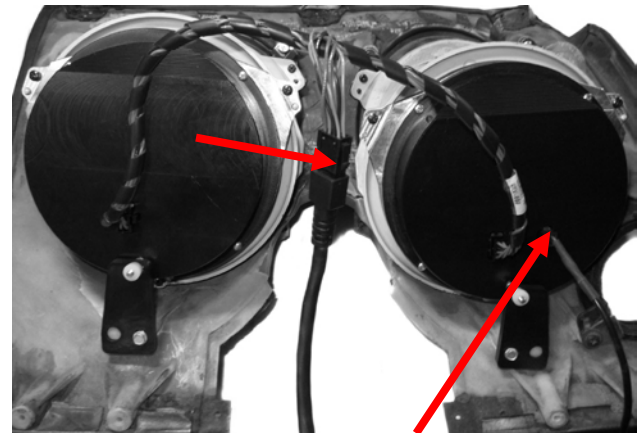
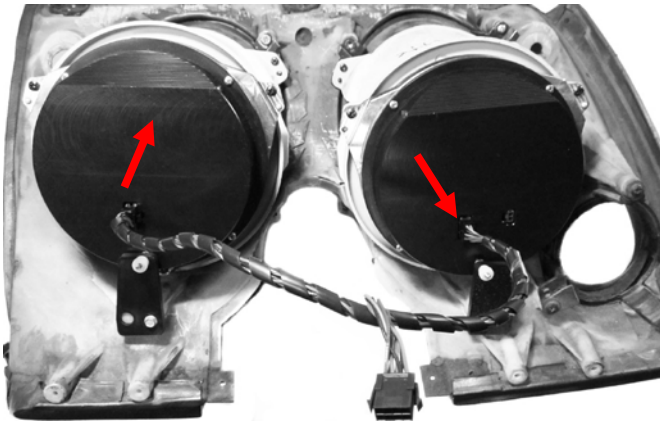
- 3A. The speedometer and tachometer are interchangeable side to side. Choose the orientation you prefer, then place the speed and tach on the main lens spacers and secure the gauges with the six (6) stock mounting screws. Use two (2) stock mounting screws to attach the ABS plastic brackets to the bezel and thumb screws to secure the brackets to the HDX gauges.



- 3B. Dashes with the vent by the driver's right knee will use the extended ABS bracket for proper Mounting.

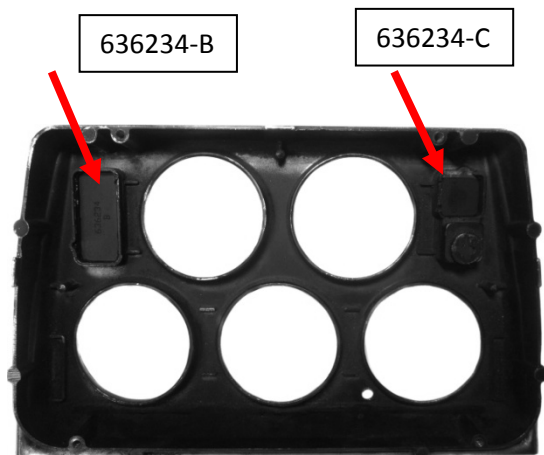


4. Connect the interconnect harness to the tachometer and speedometer, also connect the main harness and the buzzer (optional for audio feedback) to the back of the speedometer, carefully route the other end of the main harness to the control box mounting location.

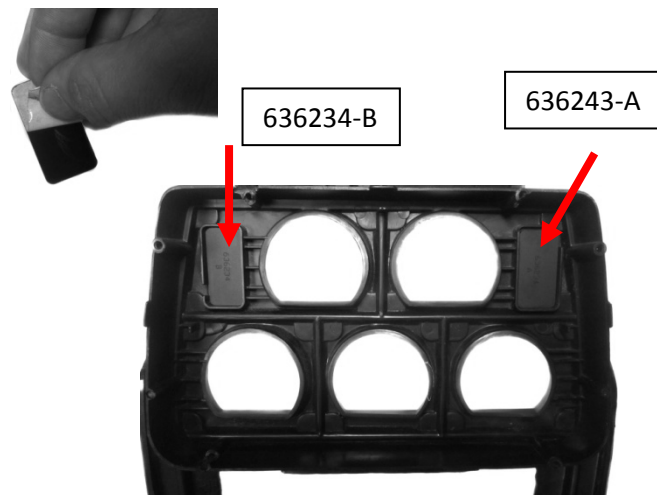


Buzzer Connector

5. Peel the paper off the two block-off lenses needed for the back of the housing appropriate for your vehicle. Place them shiny side down in the two indicator openings. Use silicone to hold them in place and avoid handling until the silicone has cured.

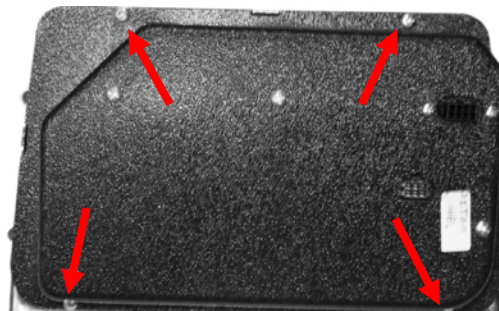


1968-'76 Style

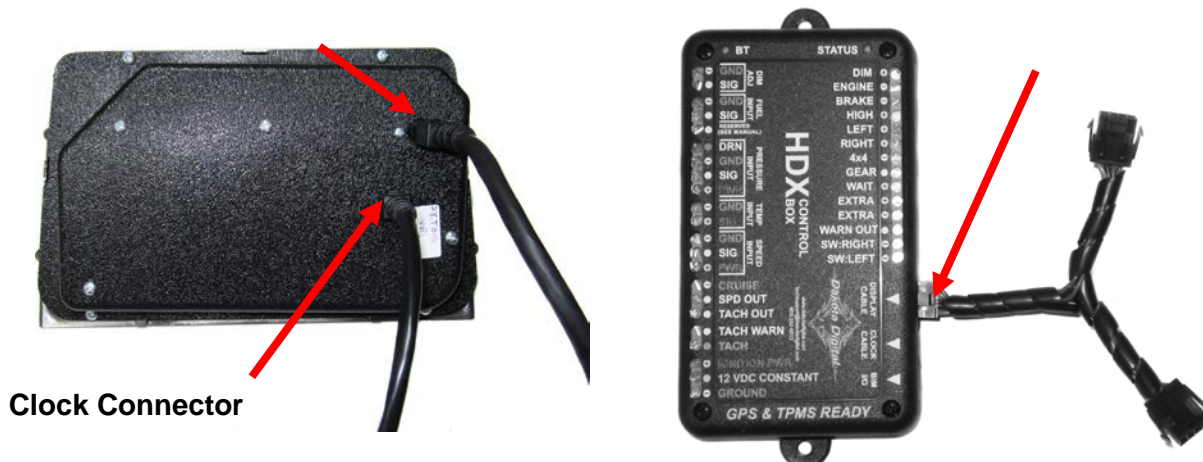


1977 Style

6. With the block-off lens secured, place the HDX center gauges over the back of the center bezel and secure the system by using the four (4) stock mounting screws.



7. Attach the remaining main harness and the clock harness to the back of the HDX display. Carefully route the other ends to the control box mounting location and connect the provided Y harness to the control box so both main harnesses can be connected.



8. The clusters are now ready to re-install into the vehicle using stock hardware. Refer to the main manual for wiring instructions to complete the HDX installation.



⚠ WARNING: This product can expose you to chemicals including lead, which is known to the State of California to cause cancer and birth defects or other reproductive harm. For more information go to www.P65Warnings.ca.gov



4510 W. 61st St. North
Sioux Falls, SD 57107
www.dakotadigital.com
dakotasupport@dakotadigital.com

Phone (605) 332-6513
Fax (605) 339-4106

© Copyright 2018 - Dakota Digital