

# CLK-64P-GTO Installation Guide

Fits 1964-67 Pontiac LeMans, Tempest and GTO factory clock housing.

1. Remove the clock from the bezel.



2. Bend open two or three crimps holding the two can halves together and separate them.

3. Remove the knob from the clock shaft. Hold the gear on the back while unscrewing the knob. If it does not unscrew you will need to cut the shaft.

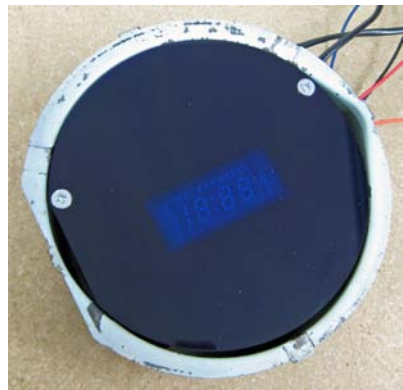


4. Remove the nut and washer from one of the time adjust switches. Pass the one with the nut and washer on through the hole near the center of the can. Pass the other switch through followed by the four individual wires.



5. Slide the gauge into the can making sure not to pinch the wires when it is fully installed. Through the original light bulb holes install the screws and large plastic washers. Snug but don't fully tighten the screws so alignment can be adjusted.

6. Adjust the clock assembly so the flat edge the left side with the flat on the can then finishing tightening the screws.



on



7. Replace the gauge front and re-crimp it to retain it. Install the clock housing to the bezel.

The switches will require two ¼" holes.

#### Introduction:

The Odyssey gauge series from Dakota Digital, Inc. incorporates the reliability and quality of our standard gauges, along with several unique features and easy mounting. These features include:

- Quartz accuracy.
- Night dimming feature.
- Very low standby power to prevent battery drain.

- High Visibility VFD display for sunlight readability.

The Odyssey series clock displays the current time in 12 hour format. The high brightness display matches our other Odyssey and STR/VFD series gauges and has the same night brightness dimming capability.

**Operation:**

The gauge needs the red, orange, and black wires connected to operate. The red wire should have switched 12 volt power from an ACC. point on the fuse panel. The orange wire should have constant 12 volt power. The black wire should be connected to a good ground point. When the blue wire has 12 volts, it will dim the display for night viewing.

**Setting the time:**

This clock is wired with external switches. One “set” button advances hours, the other “set” button advances minutes. Each time that you make a change to either the hours or minutes, the seconds are reset to zero.

**Adjusting the accuracy:**

The clock is accurate to +/-2 minutes a month as it is sent. It can be tuned for better accuracy if desired. Press and hold both of the set buttons for several seconds. The clock will display “C 0”. The “C” indicates that it is in the calibration mode and the second number is the current calibration value. The calibration value indicates the number of seconds to add or subtract each day. The clock can be adjusted from +7 sec/day to -7 sec/day.

Press the minute set button to change the cal value. Press the hour set button to return to normal clock operation.

**Wiring:**

BLACK - connect to a good ground point in the vehicle.

RED - connect to switched 12 volt power point. (An accessory terminal will work for this.)

ORANGE - connect to a constant 12 volt power point. (This will keep the correct time.)

BLUE - connect to the tail light circuit.

Troubleshooting Guide

Problem	Possible cause	Solution
Clock will not light up.	Red wire does not have power.	Connect to a location that has power when the key is on.
	Orange wire does not have power.	Connect to a location that has power all of the time.
	Black wire not getting a good ground.	Connect ground to a different location.
	Power is reversed.	Connect black to negative ground, red and orange to +12V power.
	Clock is damaged.	Return clock for repair (see instructions)
Clock will not turn off when the key is off.	The red and orange wires are reversed.	Connect the red to switched power, the orange to constant power.
Clock lights up, but does not read correctly.	Loose connection on orange power wire.	Reconnect orange wire.
	Poor ground connection.	Move ground to different location.
	Time is not set.	Set time. (see instructions)
	Clock is damaged.	Return clock for repair (see instructions)
Clock will not keep time.	Orange wire does not have constant power.	Connect to a location that has power when the key is on and off.

	Loose connection on orange power wire.	Reconnect orange wire.
	Poor ground connection.	Move ground to different location.
Clock will not dim.	Blue wire is not connected correctly.	Check wiring connections.
Clock remains dim at all times.	Blue wire is getting power all of the time.	Connect blue wire to location that has power when the headlights are on.
	Battery is very low	Recharge or replace vehicle battery.
	Clock is damaged.	Return clock for repair (see instructions)

### Technical specifications

Minimum operating voltage	-	7 volts
Maximum operating voltage	-	18 volts
(operating at or near maximum rating for an extended time can damage unit)		
Clock accuracy	-	±2 minute per month
Typical current draw (@ 13.8V)	-	0.13 A
Standby current draw (key off)	-	0.002 A

## SERVICE AND REPAIR

DAKOTA DIGITAL offers complete service and repair of its product line. In addition, technical consultation is available to help you work through any questions or problems you may be having installing one of our products. Please read through the Troubleshooting Guide. There, you will find the solution to most problems.

**Should you ever need to send the unit back for repairs, please call our technical support line, (605) 332-6513, to request a Return Merchandise Authorization number.** Package the product in a good quality box along with plenty of packing material. Ship the product by UPS or insured Parcel Post. Be sure to include the RMA number on the package, and include a complete description of the problem with RMA number, your full name and address (street address preferred), and a telephone number where you can be reached during the day. Any returns for warranty work must include a copy of the dated sales receipt from your place of purchase. Send no money. We will bill you after repair.

## Dakota Digital 24 Month Warranty

DAKOTA DIGITAL warrants to the ORIGINAL PURCHASER of this product that should it, under normal use and condition, be proven defective in material or workmanship within 24 MONTHS FROM THE DATE OF PURCHASE, such defect(s) will be repaired or replaced at Dakota Digital's option.

This warranty does not cover nor extend to damage to the vehicle's systems, and does not cover removal or reinstallation of the product. This Warranty does not apply to any product or part thereof which in the opinion of the Company has been damaged through alteration, improper installation, mishandling, misuse, neglect, or accident.

This Warranty is in lieu of all other expressed warranties or liabilities. Any implied warranties, including any implied warranty of merchantability, shall be limited to the duration of this written warranty. Any action for breach of any warranty hereunder, including any implied warranty of merchantability, must be brought within a period of 24 months from date of original purchase. No person or representative is authorized to assume, for Dakota Digital, any liability other than expressed herein in connection with the sale of this product.

# ***Dakota Digital***

4510 W. 61ST St. N., Sioux Falls, SD 57107  
 Phone: (605) 332-6513 FAX: (605) 339-4106  
[www.dakotadigital.com](http://www.dakotadigital.com)  
[dakotasupport@dakotadigital.com](mailto:dakotasupport@dakotadigital.com)

©Copyright 2009 Dakota Digital Inc.

MAN#650269